



College of Agriculture and
Life Sciences
Agricultural Experiment Station

Forbes Building, Room 314
P.O. Box 210036
Tucson, AZ 85721-0036
Tel: (520) 621-3859
Fax: (520) 621-7196
<http://ag.arizona.edu>

June 30, 2009

Ruben Ojeda
Manager, Right of Way Section
Arizona State Land Department
1616 West Adams
Phoenix, Arizona 85007

Re: Rosemont Right of Way Alignment

Dear Ruben:

Thank you for meeting with Steve Husman, Jamie Sturgess, Mike Phalen and me at the State Land Department's Tucson office on March 31, 2009. In that meeting we discussed, among other things, the water and power line right of way alignments that Rosemont Copper has proposed for its project.

One of the two alternative alignments called for running the water pipeline along the existing Santa Rita Road alignment within the Santa Rita Experimental Range (the Santa Rita Road Alignment). The second alternative alignment would run along the northern and eastern perimeter boundaries of the Range at its northeast corner (the Northeastern Alignment).

We have carefully considered the two proposals and reviewed them with the University's Range Advisory Committee. In reviewing both alternatives, we have concluded that neither proposed alignment would result in any significant adverse impact to the University's Range operations. However, after completing our review it is the consensus of the University of Arizona Santa Rita Experimental Range and its Range Advisory Committee that the Land Department and Rosemont place the two lines adjacent to the existing Santa Rita Road Alignment. We recognize that the ultimate approval of the two right of way alignments will be determined pursuant to two different processes which could result in different alignments for each, but it is our preference that they be located together in one corridor.

We prefer the Santa Rita Road Alignment because it is an existing, long established roadway corridor running through the Range. Adding these additional rights of way will not significantly change the existing conditions within the Range, or adversely impact the Range facilities or its operations because they will be located adjacent to an existing road right of way corridor. On the other hand, we think that the maintenance access roads that would be constructed along the Northeastern Alignment may attract trespassers who could disrupt the operations of the Range. With the Santa Rita Road Alignment we ask that the eastern most segment of the proposed right of way alignment deviate from the existing Santa Rita Road alignment to avoid adversely impacting two of the Ranges' photo sites located within Section 21. The proposed right of way alignment shown on the enclosed maps reflects the alignment adjustments we requested from Rosemont.

Rosemont also seeks to locate a booster pump station adjacent to the Santa Rita Road Alignment to support its water pipeline. We recognize that the booster pump station is necessary for the proper and efficient operation of the water pipeline. We have requested that Rosemont locate the facility near our existing livestock corral where Santa Rita Road and the

section lines of Sections 7 and 18 intersect because the land in this area of the Range is already disturbed by the corral operations. Placing the booster pump station at this location will have no adverse impact on the operations of the Range.

We also prefer the Santa Rita Road alignment because we believe the development of these rights of way could serve as a catalyst for creating and implementing a dust abatement program for Santa Rita Road, which has been an important, long standing goal of the Range. As you know the road is currently unpaved and the existing car and truck traffic creates a great deal of dust impacting the Range and the surrounding communities. We believe a dust abatement program will greatly benefit the Range and others in the area. Therefore, we ask that the sale of these rights of way be conditioned on Rosemont developing and implementing a dust abatement package for Santa Rita Road. If such a condition was acceptable to the Department and Rosemont, the university would be available to work with both parties in that effort.

In conclusion, it is our recommendation that the Department require Rosemont to amend its pending right of way application in order to select the Santa Rita Road Alignment instead of the Northeastern Alignment current shown in the application and that the Department's approval of the Santa Rita Road Alignment be conditioned on Rosemont doing the following:

- (1) Develop and implement a dust abatement program for Santa Rita Road;
- (2) Locate the rights of way near or adjacent to the north side of Santa Rita Road alignment, and if possible, utilize all or a portion of the existing borrow pit area for the water pipeline right of way;
- (3) Construct a sheep fence along the north side of Santa Rita Road between the waterline right of way and the power line right of way including locked gates at the entrance and exit of the SRER.
- (4) Provide funding for the Range to hire security staff to monitor the water and power line construction and to ensure that the integrity of the Range is respected and maintained during the construction phase and during their initial year of operation.

Thank you for the opportunity to review the matter with your office. Please call me with any questions or comments.

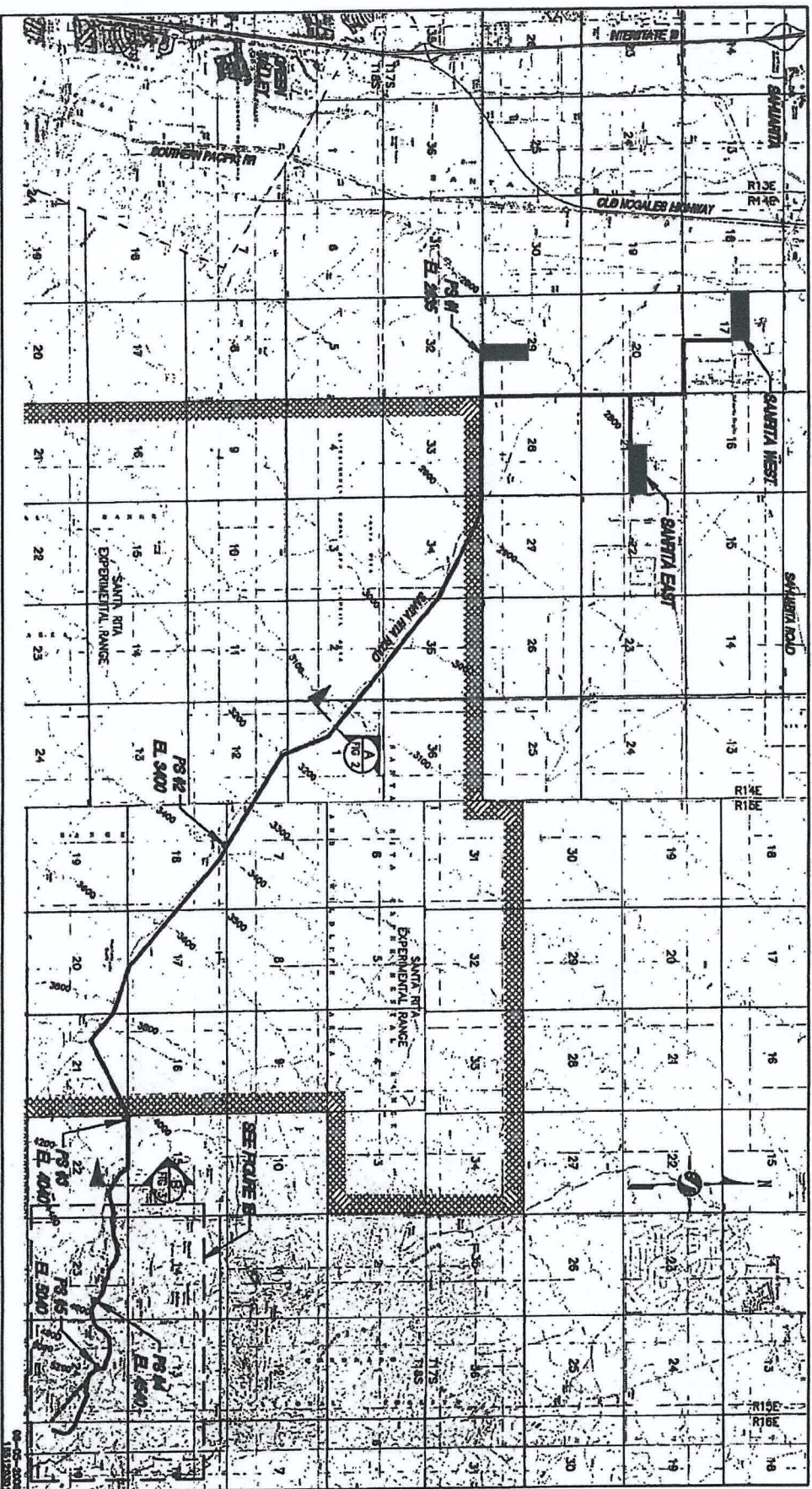
Sincerely,



Colin Kaltenbach, Ph.D.
Vice Dean and Director

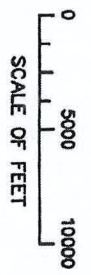
cc.. Jamie Hogue
Jamie Sturgess
Michael Phalen
Steve Husman
Mitch McClaran

Enclosures



Stantec Consulting Inc.
 201 North Benson Ave
 Tucson AZ U.S.A.
 85746-2999
 Tel. 520.750.7474
 Fax. 520.750.7470
 www.stantec.com
 V:\2011\VICING\ASB\2011 - Rosemont\VICING\ASB\2011 - Rosemont - L1016

STATION NO.	ELEVATION	LIFT	PIPE LENGTH	TOTAL HEAD
PS #1	2835.2	565.4	25.5654	673.4
PS #2	3400.2	640.2	14.1302	700.0
PS #3	4040.2	500.2	8.7102	541.2
PS #4	4340.2	500.2	6.9502	530.0
PS #5	5040.2	580.2	3.0002	592.7

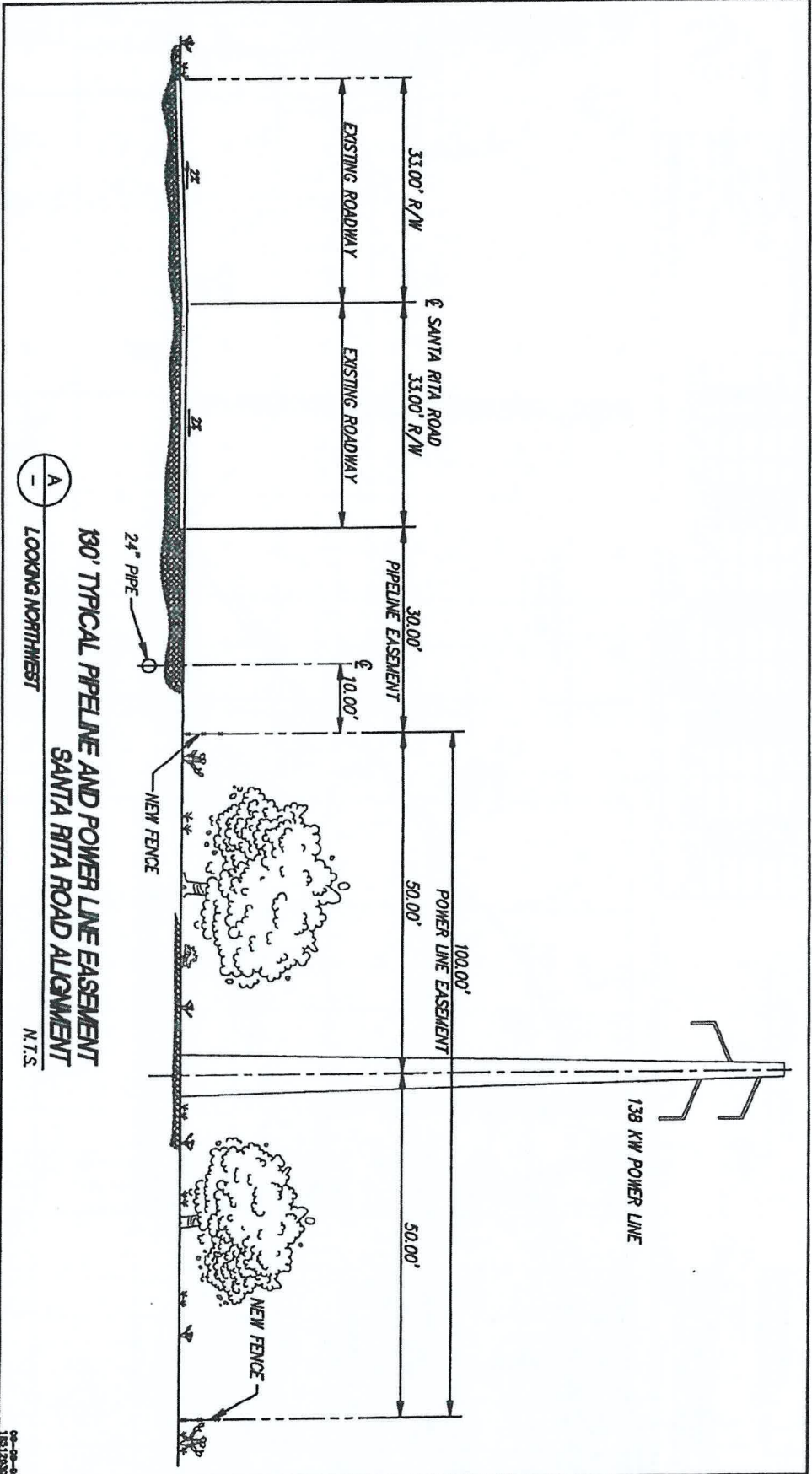


PROJECT VICINITY AND ALIGNMENT MAP
 1A
 ROSEMONT MINE WATER AND POWER LINE EASEMENT
 SANTA RITA ROAD ALIGNMENT



Stanlec Consulting
 201 North Bertha Ave
 Tucson AZ U.S.A.
 85745-2899
 Tel. 520.750.7474
 Fax. 520.750.7470
 www.stanlec.com

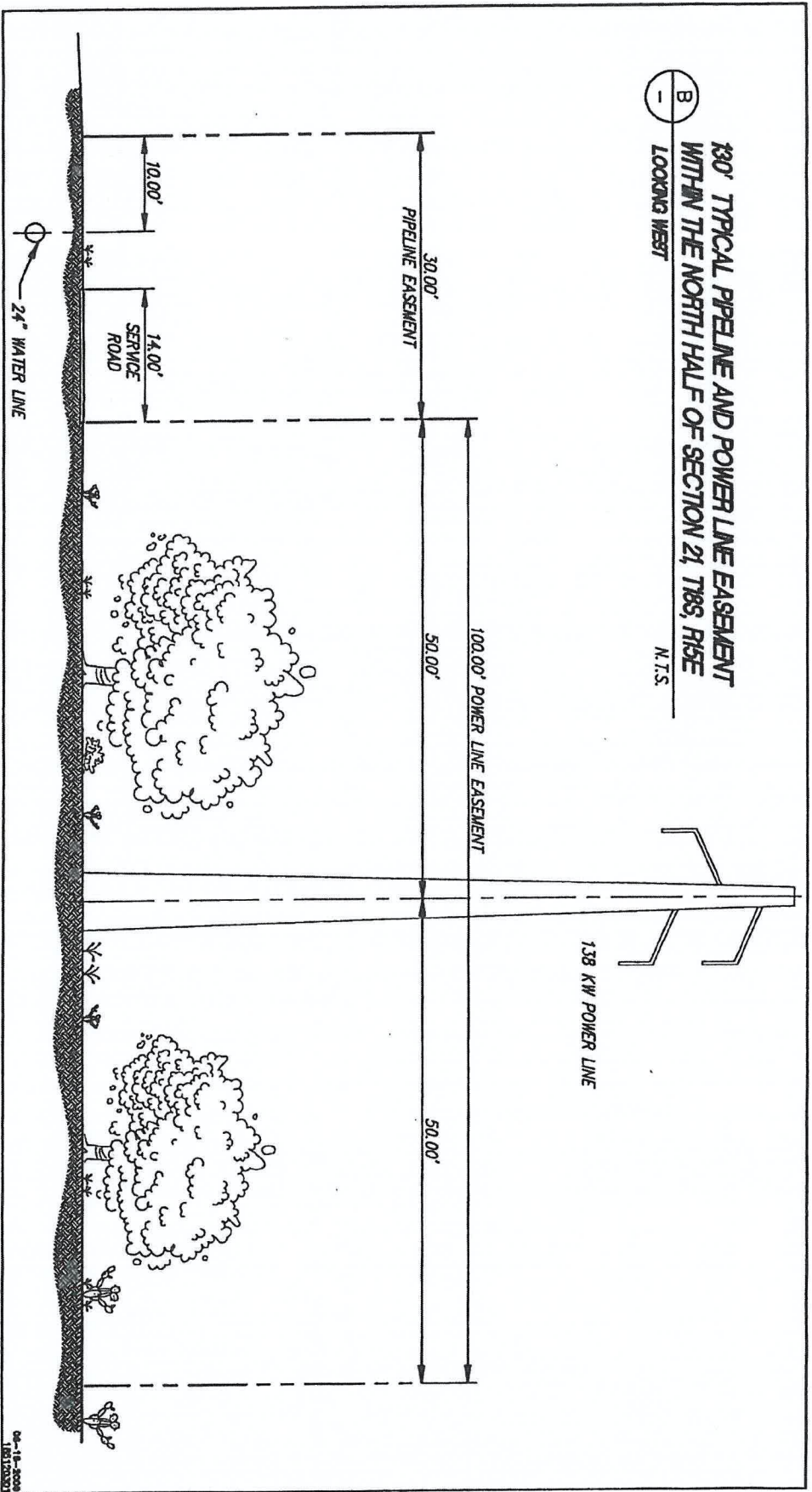
Project: ROSEMONT MINE WATER AND POWER LINE EASEMENT
 SANTA RITA ROAD ALIGNMENT
 Figure No. 2



09-09-08
 183128021
 Project: ROSEMONT MINE WATER AND POWER LINE EASEMENT
 SANTA RITA ROAD ALIGNMENT
 Figure No. 2
 TYPICAL SECTION ALONG
 SANTA RITA ROAD

ⓑ
—

**130' TYPICAL PIPELINE AND POWER LINE EASEMENT
WITHIN THE NORTH HALF OF SECTION 21, T8S, R1E**
N.T.S.
LOOKING WEST



Stantec Consulting
201 North Bondia Ave
Tucson AZ U.S.A.
85745-2999
Tel. 520.750.7474
Fax. 520.750.7470
www.stantec.com
www.stantec.com
© 2006 Stantec Consulting, Inc. All rights reserved.

06-18-2006
181735303
Civil/Project
ROSEMONT MINE WATER AND
POWER LINE EASEMENT
SANTA RITA ROAD ALIGNMENT
Figure No. 3
T8S
TYPICAL SECTION WITHIN THE NORTH
HALF OF SECTION 21, T8S, R1E

